

NEWSLETTER



IN THIS EDITION

SEAC SEPTEMBER MEETING

**PROJECT DESIGN AWARDS
PRESENTATIONS**

SEAC NOCO SEPTEMBER MEETING

YMG COMMITTEE EVENTS

2024 SEAC FALL SEMINAR

GINGERBREAD BRIDGE COMPETITION

FALL SEMINAR SPONSOR ADS

WIND COMMITTEE FUNDRAISING

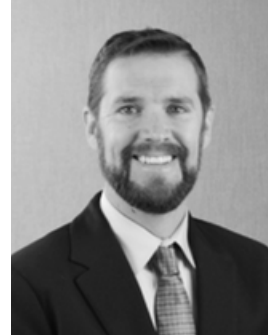
CALENDAR OF EVENTS

SEAC COMMITTEES

EMPLOYMENT AD

PRESIDENT'S MESSAGE

Fall is rapidly approaching, and kids of all ages are heading back to school. A few things come to my mind when I think about the start of another school year:



1. How pivotal a well-rounded education is for success in our industry.
2. How important it is to foster an interest in science and math at a young age.
3. How much the cost of higher education has increased since I graduated (almost 20 years ago... Yikes!).

I see part of the role of SEAC as keeping our industry healthy and growing. Part of that comes from contributing to the education of future engineers. We have a few opportunities within the organization to contribute: the SEAC Scholarship Fund and the Outreach Committee (which is looking for new members), and there are many opportunities with other organizations in the State that provide STEM outreach and support within the public schools. Please consider donating to the Scholarship Fund or joining our Outreach Committee (more information on both of these can be found on the SEAC website). The more people that get involved, the more kids we can reach!

SEAC UPDATES

- The SEAC Young Members Group has been announced as a finalist for the NCSEA YMG group of the year award! That makes two years in a row! A huge congratulations to Kamryn Froehle and her group of volunteers for all their hard work this year! The winner will be announced at the NCSEA Summit in November.



WELCOME NEW MEMBERS

Hayden Snyder - Vulcraft

Paul Barker - JVA

Pontus Ugander - Martin/Martin

Tyler Honey - Peak Engineering

Alec Gordon

Cash Cota - Martin/Martin

Jerry Brock

KL&A Engineers & Builders

Kelly Knowles - Martin/Martin

Max Loeb - PEC 1

Matthew Frydman - WJE

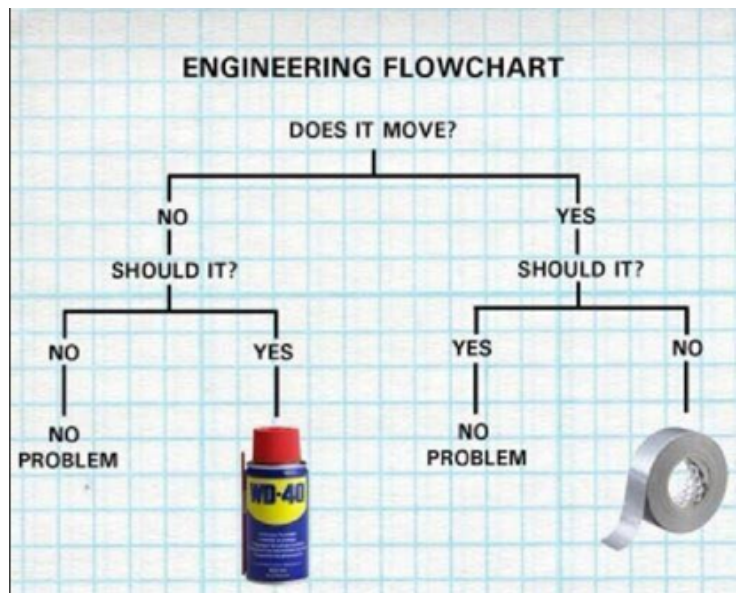
Stephen Rothweiler

Architectural Framing Systems

Teddy Perelli - HDR

- Our new project awards program ended up with nine submissions, and they are all great projects! Thank you to the companies that took the time to submit their projects. We will be announcing the winners in each category and the overall winner sometime in late September or early October!
- The fall seminar will be on October 3rd and registration is open and filling up quick! For more information, please go to the SEAC website or look for more information in this newsletter.
- Our annual meeting is all set and will be on Wednesday, October 23rd at the Downtown Aquarium. You won't want to miss this one as we have a behind the scenes tour of the aquarium as well as a presentation on the structural design by SA Miro! Keep an eye out for registration to open soon!

I know I promised that I would keep the joke of the newsletter going, but I am running out of material. This is the last "joke" I have. If anyone has a good engineering joke, please email it to me so I can include it in my last President's message in November.



Looking forward to seeing everyone at our last general meeting of the year on September 19th!

Scott Hargrove, M.S., P.E.

SEAC SEPTEMBER MEETING

Boulder Community Hospital Deconstruction and Steel Reuse

Presenters Alex Stone & Anli Ni - KL&A

SEAC & RMSCA Joint Presentation

PPA Event Center
2105 Decatur St. | Denver, CO 80211



MEETING
SPONSORED
BY



19 THURSDAY
SEPTEMBER
2024
7:30 AM - 9:45 AM



7:30 - 8:00 AM Breakfast/Networking
8:00 - 9:00 AM Presentation
9:00 - 9:05 AM Break
9:05 - 9:45 AM Project Design Awards Presentations

SEAC/RMSCA MEMBERS In-Person: \$0/Virtual: \$0 **NON-MEMBERS** In-Person: \$50/Virtual: \$30

Registration fee includes breakfast (In-Person Only), presentation, and a certificate for **1.0 PDH**.

Deadline to register is September 10, 2024

ABOUT THE TOPIC

This presentation will highlight a case study in Boulder where the Boulder Community Hospital was deconstructed and 584 pieces (160 tons) of steel was salvaged and stockpiled. The recently completed Boulder Fire Station 3 incorporated (89) of these salvaged pieces of steel into the steel framed structure. This endeavor was made possible through close collaboration between the City of Boulder, design team, general contractor, demolition subcontractor, and steel fabricator. The case study will illustrate the journey of implementing a steel reuse process and offer insights into creating a circular economy within the construction industry. The presentation highlights the benefits of reusing steel as well as address challenges engineers, fabricators and erectors may encounter when attempting to incorporate steel reuse into their projects.

ABOUT THE SPEAKERS



Alex Stone is a Principal in KL&A's Loveland office with over 16 years of experience. He is the head of the steel committee at KL&A where he leads development of company standards and tools. Throughout his career, Alex has gained technical expertise in many aspects of steel design including connection design, vibration analysis, lateral systems, and high seismic systems. Mr. Stone has been the engineer of record for numerous steel structures of varying typologies across the Rocky Mountain region, including the Boulder Fire Station 3 project. Alex Stone brings his passion in the craft to his daily work and thrives on developing creative solutions to complex problems.

Anli Ni is a structural designer at KL&A's Golden office with over three years of experience. She is well versed in structural design and analysis with all traditional building materials, specializing in multifamily housing and mass timber. As a key member of KL&A's Team Carbon, Anli focuses on reducing embodied carbon in buildings, including managing the salvaged steel inventory from the Boulder Hospital Deconstruction project and integrating this steel into new projects. Her passion lies in advancing embodied carbon policies within Colorado and incorporating reuse or other carbon reduction strategies into her daily engineering work, driving her commitment to sustainable and innovative structural design.



[CLICK HERE TO REGISTER NOW](#)

SEAC SEPTEMBER MEETING SPONSOR



FROM LANDFILL TO LANDMARK

aisc.org/sustainability

Old steel
destined for
the landfill goes
from **GARBAGE**

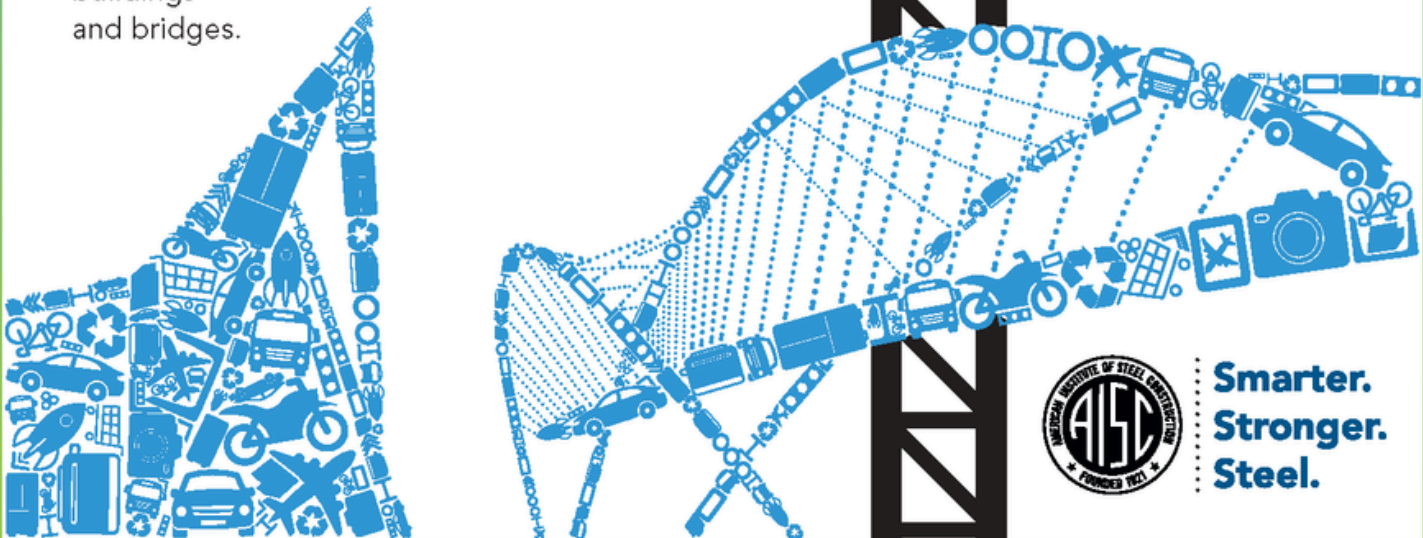
.....
to
SCRAP

.....
to
structural
STEEL

.....
to
BEAUTIFUL
buildings
and bridges.



93% recycled.
100% recyclable.
Choose American steel—
the only structural
material with a fully
circular supply chain.



.....
**Smarter.
Stronger.
Steel.**

SEAC PROJECT DESIGN AWARDS PRESENTATIONS



2024 SEAC PROJECT DESIGN AWARDS PRESENTATIONS



Stick around after the September SEAC General Meeting for the announcement of the finalists for the 2024 Project Awards! From 9:00 – 9:45am, each finalist will have the opportunity to share a brief overview of their project. Learn more about these outstanding projects designed by SEAC members.

CATEGORIES:

- New Buildings, Non-residential
- New Buildings, Residential
- Forensic/Renovation/Retrofit/Rehabilitation Structures

SEAC NOCO SEPTEMBER MEETING

NOCO



Boulder Community Hospital Deconstruction and Steel Reuse

Presenters Alex Stone & Anli Ni - KL&A

SEAC & RMSCA Joint Presentation

September 19, 2024 7:30 AM - 9:45 AM

[CLICK HERE TO REGISTER NOW](#)

Front Range Community College
4616 S. Shields Street - RP #552
Student Success Center
Mount Antero Building
Fort Collins, CO 80526

.....
NOCO/RMSCA MEMBERS: \$0
NON-MEMBERS: \$20

Registration fee includes this in-person event with presentation virtually broadcast from Denver and a certificate for 1.0 Professional Development Hour. Deadline to register is September 16, 2024.



7:30 AM - 8:00 AM
8:00 AM - 9:00 AM
9:00 AM - 9:45 AM

Check-In/Networking
Presentation
Project Design Awards
Presentations

ABOUT THE TOPIC

This presentation will highlight a case study in Boulder where the Boulder Community Hospital was deconstructed and 584 pieces (160 tons) of steel was salvaged and stockpiled. The recently completed Boulder Fire Station 3 incorporated (89) of these salvaged pieces of steel into the steel framed structure. This endeavor was made possible through close collaboration between the City of Boulder, design team, general contractor, demolition subcontractor, and steel fabricator. The case study will illustrate the journey of implementing a steel reuse process and offer insights into creating a circular economy within the construction industry. The presentation highlights the benefits of reusing steel as well as address challenges engineers, fabricators and erectors may encounter when attempting to incorporate steel reuse into their projects.



ABOUT THE SPEAKERS



Alex Stone is a Principal in KL&A's Loveland office with over 16 years of experience. He is the head of the steel committee at KL&A where he leads development of company standards and tools. Throughout his career, Alex has gained technical expertise in many aspects of steel design including connection design, vibration analysis, lateral systems, and high seismic systems. Mr. Stone has been the engineer of record for numerous steel structures of varying typologies across the Rocky Mountain region, including the Boulder Fire Station 3 project. Alex Stone brings his passion in the craft to his daily work and thrives on developing creative solutions to complex problems.

Anli Ni is a structural designer at KL&A's Golden office with over three years of experience. She is well versed in structural design and analysis with all traditional building materials, specializing in multifamily housing and mass timber. As a key member of KL&A's Team Carbon, Anli focuses on reducing embodied carbon in buildings, including managing the salvaged steel inventory from the Boulder Hospital Deconstruction project and integrating this steel into new projects. Her passion lies in advancing embodied carbon policies within Colorado and incorporating reuse or other carbon reduction strategies into her daily engineering work, driving her commitment to sustainable and innovative structural design.



SEAC YMG & AGA JOINT EVENT AT THE DENVER ZOO



Everyone had a blast learning about the benefits of hot-dip galvanized steel and where it is used throughout the Denver Zoo. Thank you Jeff Cunningham from AGA for an informative presentation and Brian Perry, Denver Zoo Project Manager, for an amazing tour! Learning about the construction of the newly opened “Down Under Exhibit” was a treat for this group of engineers.



SEAC YMG DISC GOLF & NETWORKING EVENT



26 THURSDAY
SEPTEMBER
2024
5:30 PM - TBD

[CLICK HERE TO REGISTER](#)

DISC GOLF LOCATION

8001 W 59th Ave., Arvada, CO 80004

HAPPY HOUR LOCATION

Denver Beer Co.
5768 Olde Wadsworth Blvd.
Arvada, CO 80002



Join Us for a Fun-Filled Evening of Disc Golf & Networking!

Mark your calendars for Thursday, September 26th, 2024, at 5:30 PM! We're combining the thrill of disc golf with the laid-back vibes of a happy hour, and you're invited to join the fun.

Whether you're a disc golf pro or just looking to unwind after a long day, this event has something for everyone. Enjoy the friendly competition on the course, then relax and raise a glass with colleagues and peers at Denver Beer Co. It's the perfect opportunity to network, have fun, and enjoy the beautiful Colorado evening! One drink ticket provided. We have some extra discs if you do not have one. Don't miss out on an evening of discs, drinks, and delightful company! See you there!

Got Questions? Reach out to us: SEAC: ymg@seacolorado.org
RMWEA/RMSAWWA: strout@hazenandsawyer.com ASCE: John.Plauche@rinkerpipe.com

2024 SEAC FALL SEMINAR

2024 SEAC Fall Seminar

In-Person & Virtual

Thursday Oct 3, 2024
7:00 a.m. - 12:15 p.m.
(4 PDHs)

DoubleTree by Hilton Denver
8773 Yates Drive, Westminster, CO 80031



NCSEA Seismic Design Guide, Workflow, and Seismic Design Category C (2 PDH)

Presented By: Thomas F. Heausler, P.E., S.E.
Independent Structural Engineer

The first half of this presentation will introduce a new Design Guide developed by NCSEA's Seismic Code Advisory Committee. The Design Guide begins with a seismic design workflow for buildings as well as nonstructural components and nonbuilding structures. Subsequent chapters provide design examples for simple buildings with systems such as braced frames, moment frames, and shear walls composed of various materials such as steel, concrete, masonry, and wood.

When an engineer creates calculations for a large complex building, they may simultaneously reference the Design Guide's workflow and then follow an example of a simple building of similar system and material. Following this approach should result in consistent calculations from project to project and minimize errors. The Guide is intended to benefit engineers at the beginning of their career and engineers designing in low seismic regions while confirming knowledge and understanding for experienced engineers designing in high seismic regions.

The second half of this presentation will cover the design of building and systems classified as Seismic Design Category (SDC) C. This portion of the presentation will benefit not only engineers who design SDC C structures on a regular basis, but also engineers who typically work on structures in other seismic design categories (i.e. SDC A, B, D, E & F). The presentation will highlight the differences in SDC C compared to SDC D. Calculations for an example steel-framed building will be explained in detail with specific attention to the unique provisions, or lack thereof, for SDC C.

Early Registration ends September 10, 2024.
Registration Deadline: September 27, 2024

Recommendations for Performing Structural Engineering Quality Assurance Reviews (2 PDH)

Presented By: Clifford Schwinger, P.E.
Senior Structural Engineer at IMEG Corp

Fast schedules, complex modeling software, increasingly complicated building codes, and young engineers taking on more responsibility earlier in their careers has made greater the need for all structural engineering firms to conduct in-house Quality Assurance reviews for all projects. This two-hour presentation, applicable to engineers of all levels of experience, reviews strategies and procedures for performing structural engineering Quality Assurance reviews with a focus on steel and concrete-framed building structures. Firms adopting a formal QA review process may realize benefits that can include: better designs and drawings, fewer RFI's and change orders, fewer problems during construction, increased profits, and an enhanced reputation within the profession.

Bring your company business cards to participate in the raffle.

SCHEDULE

7:00 am - 7:45 am	Check In, Breakfast, Networking w/ Sponsors
7:45 am - 9:45 am	Thomas F. Heausler, P.E., S.E.
9:45 am - 10:15 am	Break, Networking w/ Sponsors
10:15 am - 12:15 am	Clifford Schwinger, P.E.

WEBINAR LINK

If you register for the webinar, the webex unique access password for the SEAC Fall Seminar will be emailed to you a day prior to the seminar.

ABOUT THE SPEAKERS



Thomas F. Heausler, P.E., S.E. - Independent Structural Engineer

Thomas F. Heausler, P.E., S.E., has over 40 years of experience and serves as an independent structural engineer, engaged by engineering firms for mentoring, senior review, seismic code interpretations, and guidance. He is licensed in 27 states. He serves as Past-Chair of the NCSEA Seismic Code Advisory Committee and has been a voting member of the ASCE 7 Seismic Committee since 2006. Mr. Heausler has frequently presented at national and regional conferences and has authored articles for Structure Magazine. Mr. Heausler has also served as a grader for the NCEES National Structural Engineering 16-hour exam and has taught Structural Analysis and Earthquake Engineering at the University of Missouri Kansas City.

Clifford Schwinger, P.E. - Senior Structural Engineer at IMEG Corp

Clifford Schwinger, P.E. is a Senior Structural Engineer at IMEG Corp. He graduated from Lehigh University in 1976, serves on the AISC Manuals Committee, and has more than 40 years of experience designing building structures. Mr. Schwinger was awarded an AISC Lifetime Achievement Award in April 2023. From 2002-2022, Cliff Schwinger was the fulltime Quality Assurance Manager at The Harman Group. During this time, he trained new engineers, established and maintained a library of more than 1,000 typical details, and performed more than 700 Structural Engineering Quality Assurance reviews. Since IMEG's acquisition of The Harman Group in 2022, he continues to perform structural engineering Quality Assurance reviews on many of the firm's projects.



REGISTRATION FEES

IN-PERSON	Early Registration	After 9/10
Members	\$190	\$210
Non-Members	\$280	\$300
Students	\$40	\$40

VIRTUAL	Early Registration	After 9/10
Members	\$190	\$210
Non-Members	\$280	\$300
Students	\$40	\$40

Registration fee includes breakfast (for in-person attendees only), presentations, and a certificate for 4.0 Professional Development Hours (PDH). FREE PARKING is available in the hotel parking lot.

Early registration ends September 10th. Registration Deadline is September 27th.

[CLICK HERE TO REGISTER NOW](#)

FALL SEMINAR SILVER SPONSORS



NUCOR[®]

IDEA StatiCa[®]

Calculate yesterday's estimates



Boise Cascade[®]
ENGINEERED WOOD PRODUCTS



NEW MILLENNIUM
A Steel Dynamics Company



FALL SEMINAR BRONZE SPONSOR



GINGERBREAD BRIDGE COMPETITION



15 Friday
November
2024

Colorado School of Mines

Bridge Entry Fee: \$50 per bridge

Free Entry and Stipend for Student Teams

SPONSORSHIPS

Silver Sponsor - \$200

- Company name or logo on commemorative tote bag for each entrant
- Logo displayed on event website home page for 1 year with a link to your website
- Bring a banner for display at the event
- Complimentary entry to the competition for your company

Gold Sponsor - \$500

- Company name or logo on commemorative tote bag for each entrant
- Larger logo displayed on event website home page for 1 year with a link to your website
- Bring a banner for display at the event
- Complimentary entry to the competition for your team
- Complimentary entry and supply stipend for one student team.

Platinum Sponsor - \$1,000

- Company name or logo on front of commemorative tote bag for each entrant
- Logo displayed on event website home page for 1 year with a link to your website
- Bring a banner for display at the event
- Complimentary entry to the competition for your team
- Complimentary entry and supply stipend for one student team
- Contribute to the SEAC YMG Summit Scholarship to send one young member to the NCSEA Summit.



Important Deadlines:

Sponsors - Payment and logos due by Friday, October 4th.

Bridge Entries - Payment and number of team members due by Friday, October 18th.

**CLICK HERE TO
LEARN MORE**

FALL SEMINAR SILVER SPONSOR ADS

Distributing Engineered Wood and Heavy Timber across North America for Over 45 years



- Conventional Framing
 - I-Joist, LVL/LSL, Open Web Joists, Plated Wood Trusses
- Heavy/Mass Timber
 - Glulam, Timber, CLT, MPP, T&G Decking, Logs, Assembled Trusses
- Support Services
 - Design Assist, Engineering, Project Management, 3D Modeling and Coordination



303-458-1736
 info@lamwood.com
 www.lamwood.com
 1580 W. 47th Ave,
 Denver, CO 80211



3G Adhesive Family Bonded by versatility.

Handle any job with the Simpson Strong-Tie® 3G family of epoxy and hybrid acrylic anchoring adhesives. Code listed for cracked and uncracked concrete, they're easy to install and provide a high-strength hold. SET-3G™ epoxy is our most versatile adhesive with ultimate bond strength for heavy-duty, structural work. Choose ET-3G™ epoxy for general rebar doweling and threaded rod. For a fast-cure option, AT-3G™ hybrid acrylic allows same-day bolt-up in a wide range of temperatures, including extreme cold. Stocked nationwide at local retailers, our adhesives are backed by expert service and technical support.

To learn more about our entire line of 3G adhesive anchors, installation tools and accessories, visit go.strongtie.com/3G or call (800) 999-5099.



SIMPSON
Strong-Tie

Anchoring Solutions | Products, Software and Service for Smarter Building

STEEL SOLUTIONS

FOR A SUSTAINABLE FUTURE

Nucor is committed to delivering quality, reliability, and industry-leading sustainability to the construction market. Let's work together to make your next project a success.



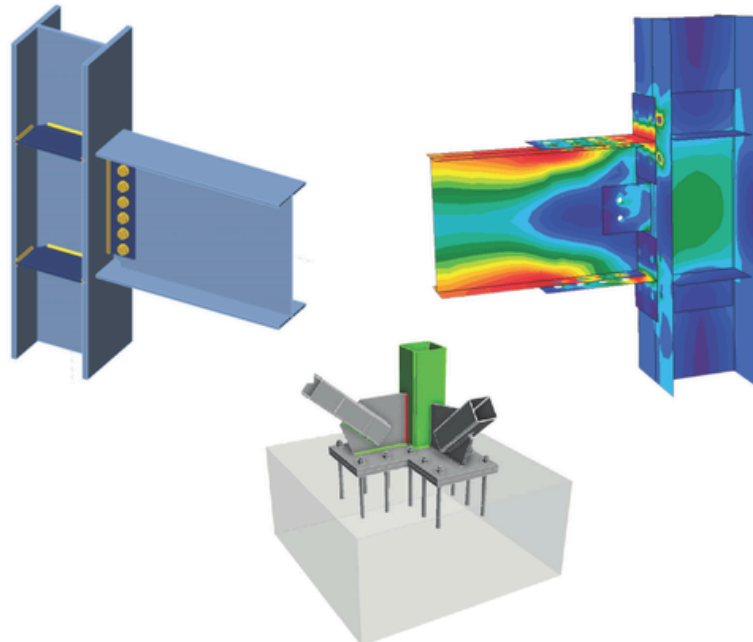
NUCOR®

IDEA StatiCa®

Calculate yesterday's estimates

CONNECTION DESIGN AT ITS BEST

- ✓ The world's largest database of 700,000+ pre-designed 2D/3D connections, base plates, HSS connections, steel-to-timber, and other connection types
- ✓ Model and design any bolted or welded connection
- ✓ Comply with AISC checks, including advanced analyses
- ✓ Fully customizable reports with equations and graphics
- ✓ BIM integrations with SAP2000, STAAD.PRO, SDS/2, RISA, TEKLA, REVIT, export to IFC, and many more
- ✓ Enabling parametric design with IDEA Open Model



www.ideastatica.com

Try IDEA StatiCa
For FREE





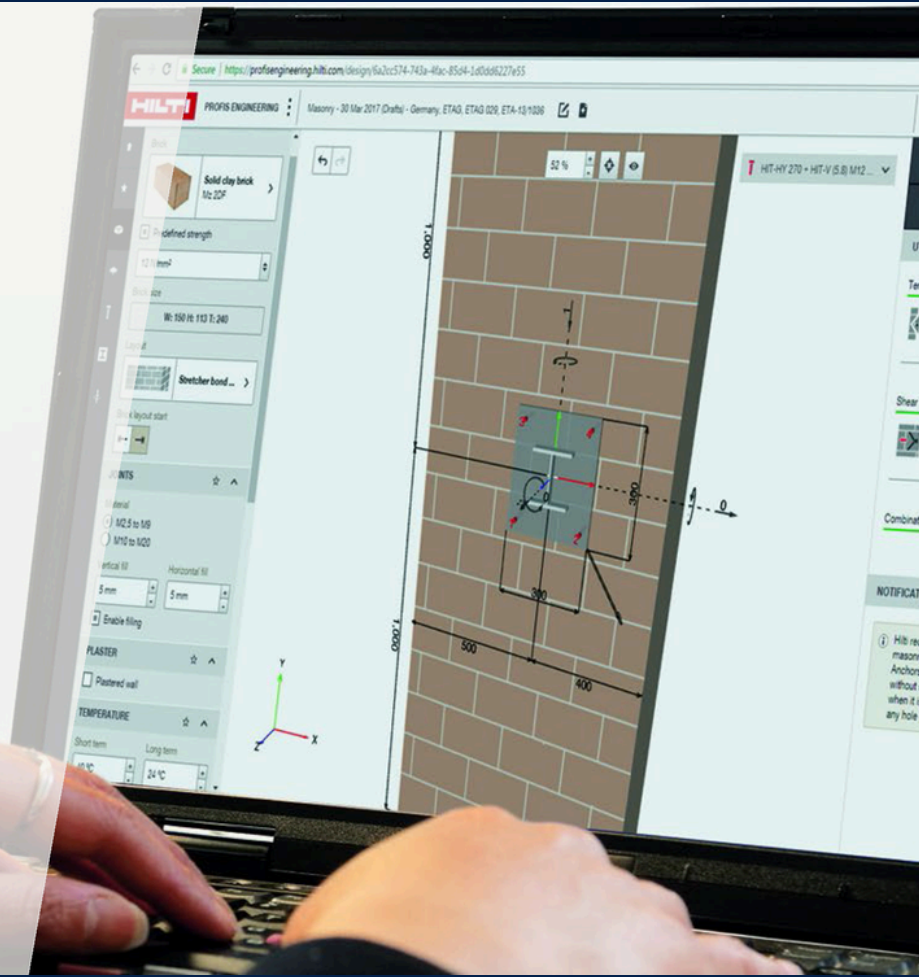
POST-INSTALLED ANCHOR DESIGN INTO MASONRY

Load and Resistance Factor Design (LRFD)

Hilti's mechanical and adhesive anchor portfolio for masonry connections are updated and compliant with the revised Acceptance Criteria published by the International Code Council. Profis Engineering Anchoring-to-Masonry module allows you to easily transition your designs to the updated LRFD design method.



Try the Anchoring-to-Masonry Module at profisengineering.hilti.com!



FOR MORE INFORMATION OR TO DOWNLOAD NOW

log on to <http://anchors.DEWALT.com/dda>

Copyright © 2022 DEWALT
The yellow/black color scheme is a trademark for DEWALT power tools, accessories, anchors and concrete adhesives.

STATE-OF-THE-ART STRUCTURAL DESIGN SOFTWARE



Designing a wood building? Ask me anything.

Emmy Hoa Tran, PE

Regional Director, CO, MT, NE, WY, ND, SD

Nationwide support for the code-compliant design, engineering and construction of commercial and multi-family wood buildings / woodworks.org



FREE PROJECT SUPPORT / EDUCATION / RESOURCES



Photo courtesy of
Design Build Services
and Dasha Armstrong

SUPERIOR SEISMIC PERFORMANCE

- **Multiple configurations** add flexibility to projects of all sizes
- **Sustainable solution** results in material and cost savings
- **Simplified erection** saves time and money



Building

COLORADO

We engineer and manufacture a full range of steel joist and deck for commercial construction projects. We're invested in people, projects and progress here and across the country.

[Download](#) the new [Flush-Frame Design Guide](#)



NEW MILLENNIUM

A Steel Dynamics Company

BUILDING SUCCESS TOGETHER

CONNECTING A CITY THROUGH EFFICIENT CONNECTIONS

The city of Houston needed a **600-foot pedestrian bridge** constructed over one the busiest highways in America. Collaboration with Atlas Tube resulted in an efficient and successful outcome – all with little interruption to traffic.

- *600-foot span, built and delivered in three sections*
- *1,216 Shuriken connections*
- *Galvanized per Texas DOT requirements*

atlastube.com/houstonbridge



**SIMPLIFY
YOUR
PROJECT**



AtlasTube
A ZEKELMAN COMPANY

Protect your project™

Founded in Colorado, VoidForm has developed a broad range of void systems to protect concrete structures and underground utilities from expansive soil damage.

Reduce your risk and improve the structural longevity of your next project.

SureVoid® • StormVoid® • PlumbingVoid® • Soil Retainers



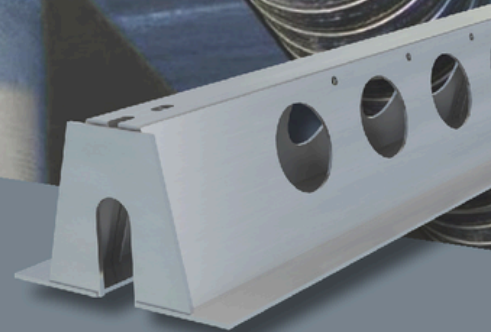
It all starts here.

888-704-VOID (8643) • voidform.com

DELTABEAM®



Resolve Your Structural Design Challenges With DELTABEAM® - Say Goodbye To Headroom Issues And Achieve Seamless Integration of MEP and HVAC Systems.



peikkousa.com

A total building solutions provider.

Throughout our history, Wells has expanded our building solutions offerings for our partners to support the entire project lifecycle; from preconstruction and design to manufacturing, construction and beyond. We provide many different prefabricated building solutions ranging from architectural to structural to building enclosure systems to meet our client and partner's needs.

Learn more at wellsconcrete.com



LEARN & EARN

Precast/Prestressed Concrete

PCI Mountain States has numerous accredited courses that we can offer your firm as in-person Lunch and Learns or as virtual presentations. They are registered for PDH credit for engineers and AIA HSW credit, and some are GBCI accredited.

Popular topics include:

- Introduction to Precast
- Sustainability
- Resilience and Life Safety
- Efficient Building Envelope Design
- Educational Facilities
- Parking Structures
- Aesthetics

Learn how precast can help you with your upcoming projects, and earn credits while you do. Schedule your course today!

www.pci.org/pcims/learn



BUILDING

PRIDE

FROM THE INSIDE OUT

WHAT YOU'RE
MADE OF MATTERS



Boise Cascade®
ENGINEERED WOOD PRODUCTS

bc.com/ewp | 800.232.0788

© 2024 Boise Cascade Company. All rights reserved.

FALL SEMINAR BRONZE SPONSOR AD



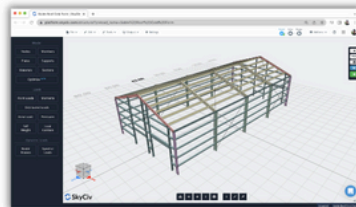
Cloud Structural Engineering Software

Streamline your workflow with SkyCiv's all-in-one software



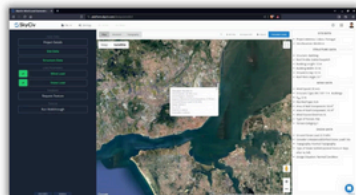
Comprehensive Solution

Our extensive modules cover all your structural analysis and design needs.



Easy to Use

User-friendly interface simplifies the process, letting you focus on design.



Cloud-based & Affordable

Access projects anytime, anywhere, and enjoy significant cost savings.

GET 14-DAY FREE TRIAL

[SKYCIV.COM](https://skyciv.com)



[CLICK HERE](#) to View
SEAC Sponsorship
Opportunities & Benefits.

***Sponsorships for the 2024
SEAC Fall Seminar are still
available. Don't miss out!***

**2024 SEAC Fall Seminar
Sponsorship Deadline:
September 13, 2024**

SEAC WIND COMMITTEE



We received great news regarding the Colorado Special Wind Region Project. Our application for the FEMA BRIC grant has been moved on to the next round of reviews for receiving funding! If we receive this grant, they will cover 75% of the project costs.

SEAC needs to raise the remaining 25% of the project costs, and to date, we have received commitments for 82% of the funds we need. Thank you to our SEAC community!

We will continue fundraising through 2025 for the remainder of our goal, so there is still time to be involved in this crucial study! Any sponsors at Bronze Level or higher will receive recognition for their contribution online through SEAC.

If you or your organization would like to learn more and/or contribute to this effort, please [CLICK HERE](#) to pick your sponsorship level.



2024 SEAC CALENDAR OF EVENTS

BOD Meetings | 8:30 AM - 10:00 AM

Thursday September 5, 2024 | Zoom

Thursday October 10, 2024 | J.R. Harris & Co.

Thursday November 7, 2024 | Zoom

SEER Committee | 12:00 PM - 1:00 PM

Wednesday October 23, 2024 Teams

Steel Committee | 7:30 - 9:00 AM

Wednesday September 18, 2024

Wednesday October 16, 2024

Wednesday November 20, 2024

NOCO Meetings | 7:30 - 9:00 AM

Thursday September 19, 2024

Thursday October 17, 2024

Thursday November 21, 2024

Seismic Committee | 8:00 - 9:00 AM

Tuesday October 1, 2024

Tuesday December 3, 2024

SEAC E-News Deadlines

October Issue - September 30, 2024

December Issue - December 2, 2024

General/Annual Meetings | 7:30 AM

Thursday September 19, 2024 | PPA Event Center

Fall Seminar Thursday October 3, 2024

Education Committee | 8:00 - 9:00 AM

Friday September 13, 2024

Friday October 11, 2024

Friday November 8, 2024

SE3 Committee | 10:00 - 11:00 AM

Tuesday September 3, 2024

Tuesday October 1, 2024

Tuesday October 29, 2024

Tuesday December 3, 2024

Sustainable Design Committee | 12:00 - 1:30 PM

Thursday October 10, 2024

Thursday November 21, 2024

Business Management Committee

Thursday October 17, 2024

SEAC Newsletter Deadlines

November Issue - November 4, 2024



SEAC COMMITTEES

Active Committees

Click on a committee name to visit that committee's homepage on SEAC.

Committee	Chairperson	Contact Phone	Board Liason
Building Department	Chad Mitchell	720-407-1031	Holly Janowicz
Business Management	Tom Soell	303-444-1951	Max Lehman
Education	Mere Hall Philip Taylor	470-398-6553 303-565-4882	Sara Mickus
Existing Structures	Ben Cook Donald Harvey	303-860-9021 303-444-3620	Evan Hammel
Nominating	Ben Nelson	303-431-6100	Scott Hargrove
Northern Colorado	Greg Black	970-213-1824	Scott Hargrove
Scholarship	Jeannette Torrents	303-444-1951	Jordan Jarrett
SE3	Jordan Jarrett	720-352-2979	Jordan Jarrett
Seismic	Rob Jackson	303-870-9334	Holly Janowicz
SEER	Mere Hall	470-398-6553	McKenzie Glass
Steel	Sylvia Iverson	720-672-3520	Jordan Jarrett
Outreach	Brian Lobmeyer	303-783-4797	McKenzie Glass
Sustainable Design	McKenzie Glass	307-202-1677	McKenzie Glass
Western Slope	Sara Mickus	970-618-7708	Sara Mickus
Wind	Dale Statler	303-914-4300	Jordan Jarrett
Wood	Jeremy Crandall	303-458-1736	Sara Mickus
Young Members	Kamryn Froehle	907-854-8757	Holly Janowicz

Ad Hoc Committees

Committee	Chairperson	Contact Phone	Board Liason
BIM Committee	Open		Max Lehman
Ethics	Peter Marxhausen	720-618-6473	Evan Hammel
Licensure and Continuing Education	Brian Lobmeyer Chad Mitchell	303-783-4797 303-741-3737	Max Lehman
Membership	Matthew Hood Lacey Goetz	303-318-6539 303-804-7003	Evan Hammel
Snow Load	Jeannette Torrents	303-444-1951	McKenzie Glass
Structural Engineering Practice	Ben Cook	303-909-7438	Scott Hargrove

EMPLOYMENT ADS

WE ARE HIRING!

ENTRY LEVEL STRUCTURAL ENGINEER (E2)
SALARY RANGE \$80,000 - \$110,000

**WE NEED AN ENGINEER WHO LIKES VARIETY,
A FAST PACED ATMOSPHERE, AND OPPORTUNITY FOR GROWTH**

WE WORK ON ICONIC LANDMARKS AND LARGE COMMERCIAL PROJECTS

To find out more go to: www.integralengineeringco.com/careers



[**CLICK HERE TO LEARN MORE**](#)

Images by James W. Jenson Photography [JWJP]



NEWSLETTER ADS

YOUR ADVERTISEMENT HERE

Do you want to promote your company and build name recognition with structural engineers in Colorado?

Do you have an engineering job opening at your firm and are looking for a qualified candidate?

Consider advertising with SEAC.

SEAC publications reach over 300 members monthly, including professional engineers, suppliers, and vendors.

Employment ads are posted on the SEAC webpage for two months, in one bi-monthly SEAC Newsletter and one bi-monthly SEAC E-News Blast (two months posting).

Contact Dawn Miller at administrator@seacolorado.org

EMPLOYMENT ADS

Full Page Employment Ad Members: \$250 Non Members: \$300

1/2 Page Employment Ad Members: \$150 Non Members: \$180

1/4 Page Employment Ad Members: \$100 Non Members: \$120

2024 SEAC ANNUAL MEETING

SAVE THE DATE

23 WEDNESDAY
OCTOBER
2024

**SEAC ANNUAL MEETING
AT THE DENVER AQUARIUM**



2024 SEAC BOARD OF DIRECTORS

PRESIDENT



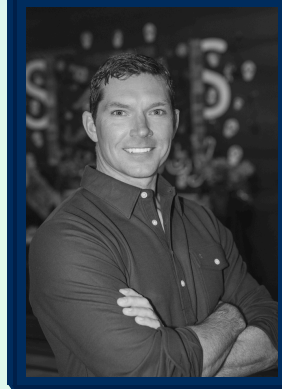
Scott Hargrove
Knott Laboratory

VICE PRESIDENT



Jordan Jarrett
Colorado State
University

SECRETARY



Max Lehman
Wallace Design
Collective

DIRECTOR



Evan Hammel
J.R. Harris &
Company

DIRECTOR



Sara Mickus
Evolve Structural Design

DIRECTOR



McKenzie Glass
Martin/Martin

PAST PRESIDENT



Holly Janowicz
BYLD