



SEAC

GENERAL NOTES

Structural Engineers Association of Colorado Newsletter

JULY GENERAL MEETING

Schedule

Mark Your Calendar
(2007)

General Membership Meetings

(Breakfast 7:30 a.m.)
January 25
March 15
May 17
July 19
September 20

Business Practice Committee Meetings

(Breakfast 7:30 a.m.)
February 8
April 12
June 14
August 9
October 11

SEAC Board of Directors Meetings

(7:30 a.m.)
January 11
February 7
April 4
June 6
August 1
October 3

Annual Dinner Banquet

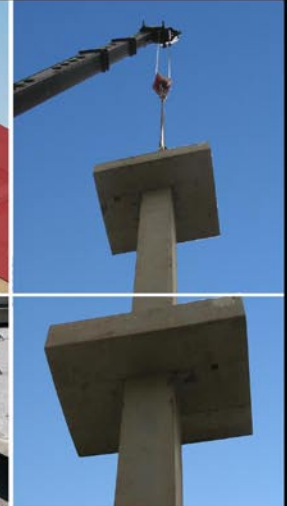
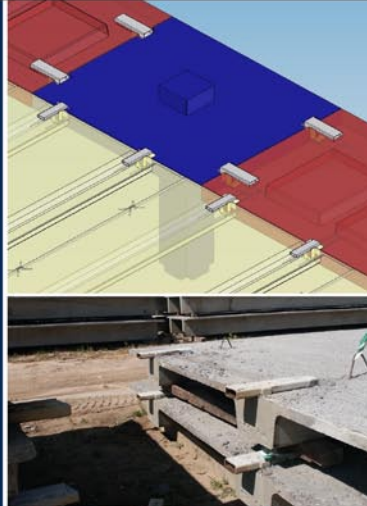
November 15
6 - 9 p.m.

PRECAST RIB SLAB FRAMING:

Challenge: Develop precast alternative to shallow C.I.P construction

Solution: Rib Slab Framing

This Patent Pending precast framing system utilizes integral column capitals with hung beam and slab connections. The integral column capitals can accommodate balcony conditions typical to residential construction. This post-topped system complies with a 2 hour un-restrained fire rating.



PRECAST SEGMENTAL CORES:

Challenge: Provide lateral resisting cores for a winter project in the mountains while emulating monolithic behavior due to larger than normal lateral loads.

Solution: Precast Segmental Cores

Manufactured in a controlled environment, these units can be hauled and erected during inclement weather conditions. Innovative connections in fewer locations results in a shorter erection duration.



5801 Pecos St.
Denver, CO 80221
www.rmpprestress.com
sales@rmpprestress.com
303-480-1111



ROCKY MOUNTAIN PRESTRESS
PCI Certified

Don't Miss Out - May General Meeting

Date: Thurs. July 19, 2007
Speaker(s): Bill Field, Rocky Mountain Prestress
Location: Renaissance Denver Hotel
3801 Quebec Street (South of the I-70
Quebec Intersection)

Please e-mail your reservations to **Caryn** at: seac@martinmartin.com.
Reservations MUST be made By 12:00 pm - Monday, July 16, 2007.

Officers & Board Members



Stan Neujahr
President
Neujahr & Gorman, Inc.
303-377-2732
stanneujahr@neujahrgorman.com



Rodd Merchant, P.E.
VP/Treasurer
JE Dunn Construction
303.691-7632
rodd.merchant@jedunn.com



Elizabeth Jones
Secretary
KPF Consulting Engineers
303-865-5800
elizabeth.jones@kpcf.com



J.R. Barker
Past - President
Structural Consultants, Inc.
303-399-5154
jr@sci-denver.com



John Malcom
Director
Peak Engineering, Inc.
303-274-0707
jmalcolm@peakengr.com



J.D. Schafer
Director
Stresscon Corporation
303-777-0977
jdschafer@stresscon.com



Jim Royston
Director
Western Engineering &
Research Corp
303.757.4747
jim@werc.com

Submit comments/articles to:

Ben Nelson

Newsletter Editor
Structural Engineers
Association of Colorado
c/o **Martin/Martin, Inc.**
12499 West Colfax Avenue
P.O. Box 151500
Lakewood, CO 80215
(303) 431-6100 x400
(303) 431-6866 fax
bnelson@martinmartin.com
WWW.SEAColorado.org

Information for inclusion in the newsletter must

Caryn L. Bauer
SEAC Executive Assistant
seac@martinmartin.com

President's Message

It's July and I am half way through my term as president. So far it has been very rewarding although it has been more work than I anticipated. I have commented many times about how much this organization has grown and how much it accomplishes for a volunteer organization. I would like to take this opportunity to keep you informed about just a few of the things that are happening.

SEAC has finally reached a point where we have to file tax returns and register as a 501C6 non-profit organization with the Internal Revenue Service. The accounting firm of Bondi and Company Certified Public Accountants has been retained to file the tax returns and prepare the application for the 501C6 status.

The Law firm of Osgood and Harris in Boulder has been retained to help us with the formation and IRS filings required for the scholarship fund. We are in the process of setting up a 501C3 non-profit corporation to administer the scholarship fund that is being established. The hope is to have the scholarship program set up and funded by the end of this year so we will be in a position to award a scholarship in 2008. If anyone has an interest in being involved in the scholarship program they should contact a Board Member or myself and let them know.

The breakfast sponsor program has been very successful and we appreciate all of the sponsors. It has provided our members with valuable information about their different products as well as helped defray some of the cost of the breakfasts. The bottom line is that it has provided additional income without having to increase the dues. Boise Cascade has volunteered to sponsor the July breakfast and Alpine Site Services, Inc. will be the sponsor for the September meeting. I would like to thank J.R. Barker for arranging the sponsors this year.

This year's annual dinner and awards banquet will be held on November 15, 2007 at the Red Rocks Visitor Center. If anyone has not been there they should get on line and see what a great facility it is. Shaw Construction was the Contractor on the project and they have agreed to help sponsor this activity. Jolly Demis

will provide the entertainment. Jolly is a nationally known comedian and an award winning singer-songwriter. His spontaneous wit and unique ability to involve every member of the crowd will leave everyone with a smile on their face and a song in their heart. In addition to the entertainment, we will acknowledge three of our past presidents and present a few additional awards to some of our members. It is for members and spouses or guest and everyone should plan to attend. It will be a fun evening.

Dick Cunningham continues to work on revising the snow load survey using the new methods that have been agreed on to interpret the data and he hopes to have the report revised by the middle of July and ready to be mapped in August.

I am happy to report that the resolution to endorse QBS Colorado, an organization that promotes qualification based selection of engineering services, was unanimously passed at the May meeting. Stan Welton with Martin/Martin volunteered to serve as our representative.

Some of the other upcoming events will be the September breakfast meeting and the Fall Seminar. We are planning to have a presentation on 'Testing and Inspection of Masonry' as the topic for the September breakfast meeting. Our Education committee is busy planning the fall seminar and they are looking into putting on the ATC-45 course. The program provides guidelines and procedures for conducting post-wind-storm and post-flood building safety evaluations. They want to also include evaluations for damage caused by heavy snowfalls as part of the course. The evaluations will determine if weather-damaged or potentially damaged buildings are safe for use, or if entry should be restricted or prohibited.

The biggest benefit of being a member of this organization is the ability to interact and share ideas with other structural engineers and this occurs when you become involved and attend the various events that are planned for you. I am looking forward to seeing everyone at the July breakfast meeting.

GENERAL NOTES - *Keep them CLASSIFIED!*

Structural Engineers Association of Colorado Newsletter Classified Section
& Other General Announcements



The Denver office seeks an entry level and experienced structural engineer. Entry level candidates shall possess a BSCE or BSAE (MS preferred) with a focus on structures. For experienced candidates, Colorado experience is preferred; seismic experience a plus!

We offer a unique work environment with a small office camaraderie and team work ethic, along with the stability and resources of one of the largest structural firms in the United States.

We are looking for enthusiastic and talented people to join our team. If you are interested in this exciting opportunity, please send your resume in confidence with a cover letter to:

KPFF Consulting Engineers, Inc.
P: 303-865-5800, F: 303-865-5810
elizabeth.jones@kpff.com
www.kpff.com

R. R. RUSSELL, ENGINEER

R.R. RUSSELL, ENGINEER has an immediate opening for a Structural Engineer. We are looking for an experienced Professional Engineer with MSAE or MSCE education, with emphasis on structures, who could help on some small projects, leading into larger more challenging work. Presently our focus is on commercial and institutional building projects, although past work has included all types of Structural Engineering.

Fax Resume to (303)368-4693
R.R. RUSSELL ENGINEER
1980 S. Quebec St. Suite 206
Denver, Colorado 80231
(P): (303) 368-1108



We are seeking a Field Sales Engineer. Your focus is on the education of product design to architects and the engineering community as well as current and prospective customers. This position participates in the growth of Hilti by providing competent recommendations to engineers and architects on specific applications using sound engineering judgment. Responsibilities include providing technical support to Hilti's sales force and customers consistent with market strategy. This includes offering professional educational seminars, presentations, and testing details informing the customer of Hilti products, their performance characteristics, applications, and product limitations. This position will have direct contact with salespeople or strategic business personnel to assess application problems and opportunities. The successful candidate will have a high energy level, be willing to work in a fast-paced environment and must enjoy working with a variety of customers (engineers, architects and contractors).

Successful candidates will receive a competitive salary, aggressive bonus plan, full benefits including a generous 401k plan plus a company vehicle.

See our website for details and requirements.

Please apply at www.us.hilti.com under the Careers tab or email resumes to andrea.jones@hilti.com or fax them to 918-461-6675.



We seek to hire talented structural engineers with 0-10 year's related experience and BSCE, BSAE, MSCE or MSAE Degree with focus on structures. If you are highly motivated, possess strong technical and communication skills, and are passionate about your career, we offer an environment in which you can thrive.

Our employees enjoy a competitive salary, incentive bonuses, 401-k contributions and company stock ownership benefits as well as generous vacation and insurance benefits. Martin/Martin, Inc. is an Equal Opportunity Employer.

Email or fax your letter of interest and resume' to:

Martin/Martin, Inc.
12499 W. Colfax Ave.
Lakewood, CO 80215
303-431-6100 (p)/303-431-6866(f)
bnelson@martinmartin.com
www.martinmartin.com

Classified Adds Policy

To place an ad please contact
Caryn Bauer at:
seac@martinmartin.com

Employment Ads must be kept to
100 (maximum).

The cost is \$100.00.

Ethics

Ethics is difficult to communicate. Choosing between good and evil is usually easy but choosing between competing goods can be much harder. Situations involving ethical questions do not always have unique answers. We are better prepared to handle difficult situations if we have higher levels of communication and a better understanding of the subject.

Educators and Professionals are influential to many young minds and serve as role models to them. If each professional knowingly or unknowingly were to plant a single unethical seed in the mind of two young engineers and those two convey it to two more engineers, and so on, it would not be very long before we could face an ethical dilemma. Communicating ethics is important in all phases of our work. If there is a break in the ethics cord we all lose.

Even though ethics starts in the sandbox, not in graduate school or on the first job we must constantly develop effective ways of communicating the importance of ethics in our profession as well as our everyday life. We must create candor in the workplace so employees feel safe to bring up touchy issues and a workplace where there is trust between employees with no fear of retribution. The employer must make sure that employees have the resources, training, skill and knowledge to get their job

done the right way. Everyone must clearly understand the organizations ethical obligations and expectations and supervisors and managers must set the highest ethical standards through their own style of leadership.

These thoughts on ethics were taken from a paper written by Jimmy H. Smith, PhD., P.E. titled 'Ethical Leadership'. Jimmy Smith is a Professor of Civil Engineering and Director, Murdough Center for Engineering Professionalism at Texas Tech University.

**Congratulations!
Jim Harris**



2007 Best of the Best Award

As in the past, Structures Congress attendees voted on the presentation they felt was the "Best of the Best." SEI is pleased to announce that the 2007 winning presentation is "ASCE 7-05 Seismic Provisions" by **Jim Harris** of Denver. Some of you may recall that Jim was also recognized last year. Harris will receive \$1,000 towards his attendance of next year's Structures Congress in Vancouver. The drawing winner of CDs of ASCE/SEI 7-05, Minimum Design Loads for Buildings and Other Structures and ASCE/SEI 41-06, Seismic Rehabilitation of Existing Buildings is Paul Askham of New York City. Congratulations to both!



GENERAL NOTES - ANNOUNCEMENTS

JULY'S SPONSOR: BOISE CASCADE

THANK YOU

INVEST A LITTLE. SAVE A LOT.



BOISE VERSA-STUD

Many homebuilders believe Boise's Versa-Stud® laminated veneer framing lumber is bar-none the best vertical framing material in the world. It's long, strong, and straight as an arrow -- especially important when you frame tall walls, window walls in high-wind situations, stairwells, entrance door walls, elevator shafts, and wherever cabinetry will be installed. Versa-Stud could add a few points to your total framing bill, but you'll more than make up the difference in fewer framing hours, stronger and straighter walls, and faster finishing.

Versa-Stud offers at least 2 times more bending strength and 20% more stiffness than no. 2 SPF 2x6 studs, and none of the checks, cracks or twists that can plague solid lumber. It's available in 1-1/2" width and five different depths --

3-1/2", 5-1/2", 7-1/4", 9-1/4" and 11-1/4" in lengths up to 24'. And it's price-competitive with laminated strand products, but offers all of the advantages of authentic laminated veneer lumber.



Versa-Stud is just one of the ways Boise can help you build more profitably in 2007. To learn more, view "17 ways you can build more profitably in 2007" online at www.bc.com/ewp or call 800-232-0788 to receive a free copy.

BOISE ENGINEERED WOOD PRODUCTS
Great products are only the beginning.™

BOISE
Engineered Wood Products

© 2007 Boise Building Solutions Manufacturing, L.L.C.
Boise, BC Frammer and SawTek are trademarks of Boise Cascade, L.L.C. or its affiliates.

MAY BREAKFAST MEETING

Thank you, John for speaking at the May SEAC General Meeting.



John H. Hart, P.E.
Coggins and Sons, Inc.

THANK YOU - VULCRAFT for Sponsoring the MAY SEAC General Meeting

NUCOR
VULCRAFT GROUP



CAGE

Geotechnical Study Guidelines for Light Commercial and Residential Buildings in Colorado

The Colorado Association of Geotechnical Engineers (CAGE) will soon publish *Geotechnical Study Guidelines for Light Commercial and Residential Buildings in Colorado*. This document is the result of a three year effort to develop guidelines to assist in the performance of geotechnical investigations and design studies. After appropriate review and input from the membership, the CAGE Board approved the publication of this document at its most recent meeting held on May 9, 2007.

CAGE was established in 1995 to advance the practice of geotechnical engineering for the benefit of public safety and the geotechnical engineering profession throughout the State of Colorado. The organization has now grown to approximately 120 members. CAGE holds regular luncheon meetings in the Denver metropolitan area, with technical presentations that are often of interest to the structural engineering community. A Southern Chapter of CAGE has also been recently formed in the Colorado Springs area.

Anyone interested in becoming an associate member of CAGE is encouraged to contact Mr. John H. Hart at jhart@cogginsandsons.com or 303.791.9911



Please welcome our newest members to SEAC:

Christopher S. Dunbar (Professional Member)
Wiss, Janey, Elstner Associates, Inc.

Christopher E. Langum (Affiliate Member)
KPF Consulting Engineers

Reminder

Annual SEAC Dinner is scheduled for November, 15, 2007 at the Red Rocks Visitor Center. More information to come.